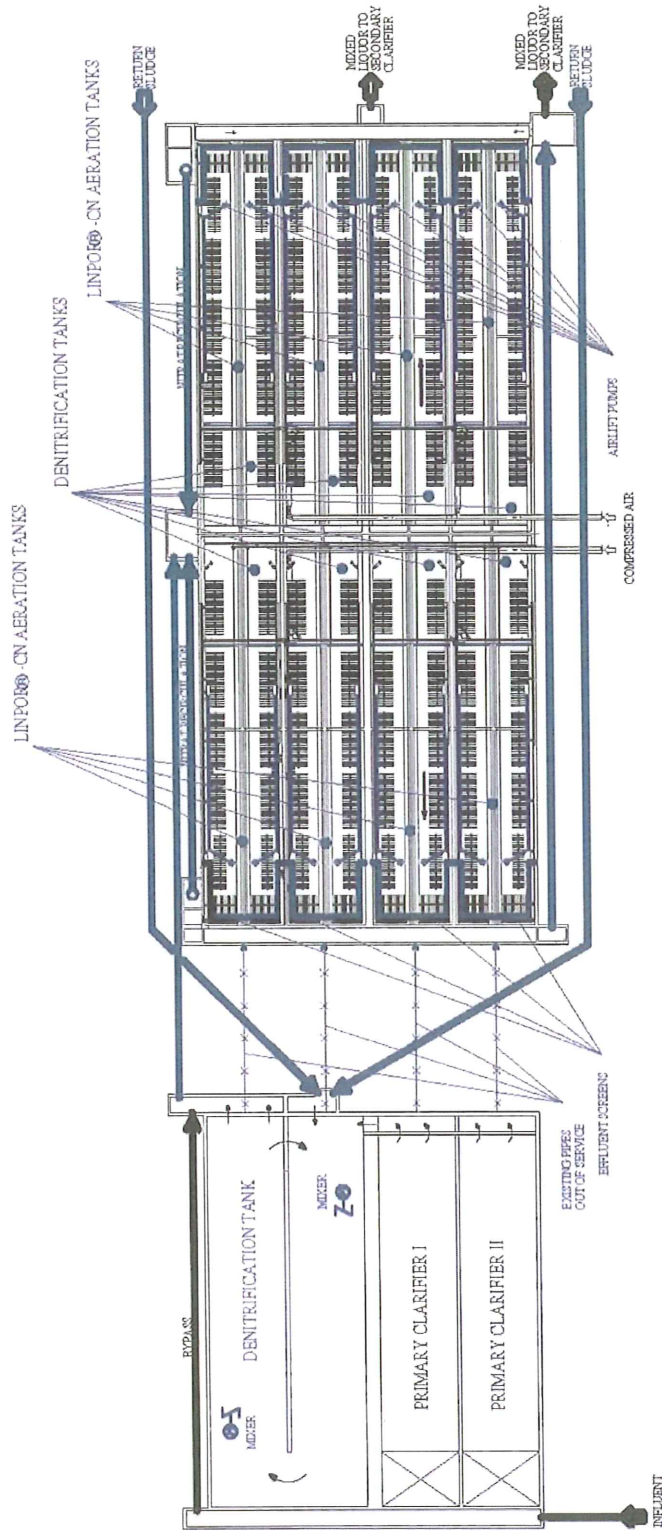
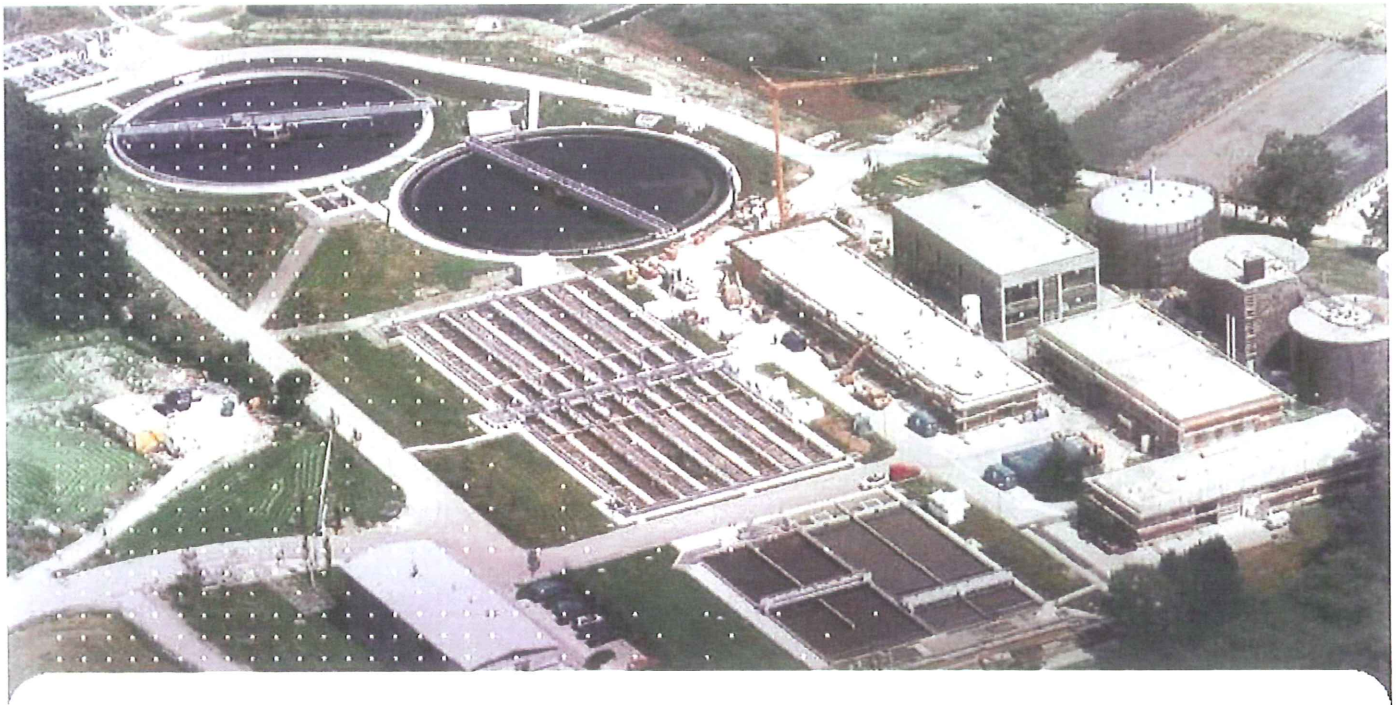


# LINPOR®-CN process for municipal WWTP Starnberg / Germany

**STRABAG**



— EXISTING  
— NEW



## WASTE WATER TREATMENT

### CLIENT

AV-Starnberger See

### LOCATION

Starnberg/Germany

### CAPACITY

Wastewater flow	25 000 m <sup>3</sup> /d
BOD <sub>5</sub> load	6 000 kg/d
TKN load	1 250 kg/d
Design capacity	100 000 P.E.

### START - UP

2000

### PROJECT

LINPOP<sup>®</sup>-CN process in a municipal wastewater treatment plant

### PROCESS

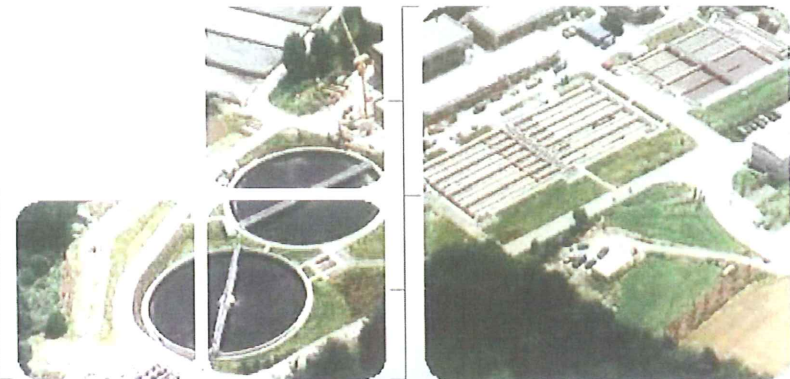
LINPOP<sup>®</sup>-CN activated sludge system using high porosity plastic foam cubes for COD/BOD<sub>5</sub> degradation, N and P elimination

### FINAL EFFLUENT PARAMETERS (LIMIT)

- BOD<sub>5</sub> < 10 mg/l
- total N < 18 mg/l

### SCOPE OF WORK

Supply, commissioning and start-up assistance of LINPOP<sup>®</sup>-equipment



**STRABAG Umwelthanlagen GmbH**, former Linde-KGA Umwelthanlagen GmbH  
 Business Unit Water & Waste Water Technology  
 Klausenburger Str. 9, 81677 Munich  
 P.O.B. 80 05 52, 81605 Munich, Germany  
 Phone +49.(0)89 92 10 48-2548, Fax +49.(0)89 92 10 48-2422  
 e-mail: water@strabag.com



**STRABAG**